

Quality

- ISO 9001 Certificated Company
- CRCC Petrobras Certification and Qualification of Company and Products
- ONIP Certification

Main Features

- Function: block physical bodies and protect equipment in the downstream flow line
- Construction: AWWA C561, NBR 11213:2001 and Expertise FKB Size: 4" (100mm) to 200" (5000mm) (*)
- Flow: Bidirectional
- Fixation: direct in concrete or embedded in concrete
- Light and compact equipment
- Design: Square or Rectangular
- Manual RASPING Cleaning System
- Versatile: manufactured according to customer's needs
- Options: Removable Grid and Fixed Grid
- Lifting by Fishing Beam, Handlog and / or Hooks with hoist system

General Application

- Sewage treatment plant stations, hydroelectric plants, pumping systems, paper and cellulose and etc.
- Suitable for working with liquids in general.

Pressure

According to customer needs.

Internal Test and Inspection

Hydrostatic: AWWA C561 / DIN 19569-4

Performance: 1 (one) Complete Cycle (Open and Close)

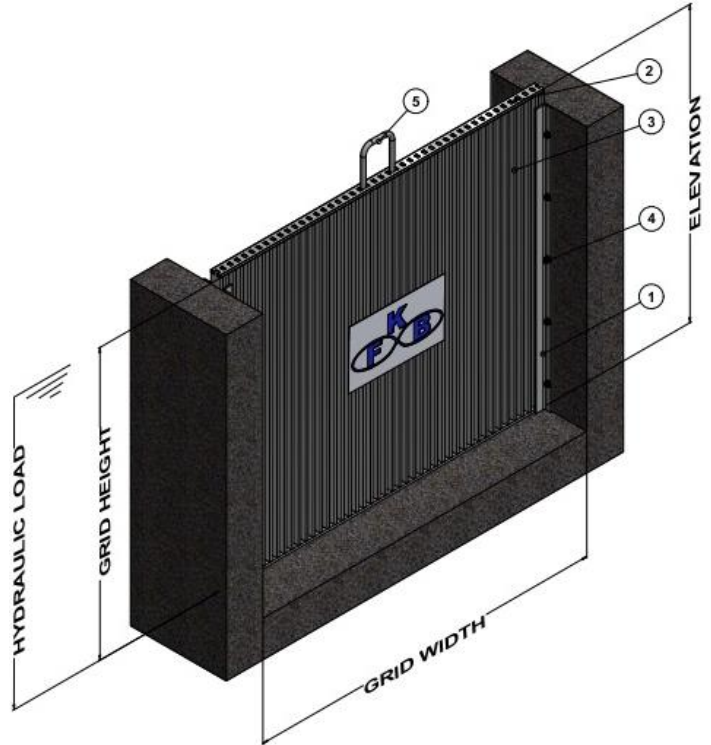
Painting: NBR 14847

Visual: NBR 15185

Dimensional: Approved Drawing

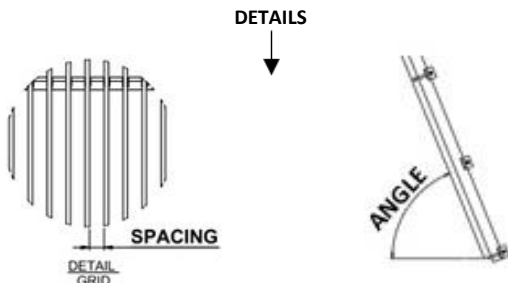
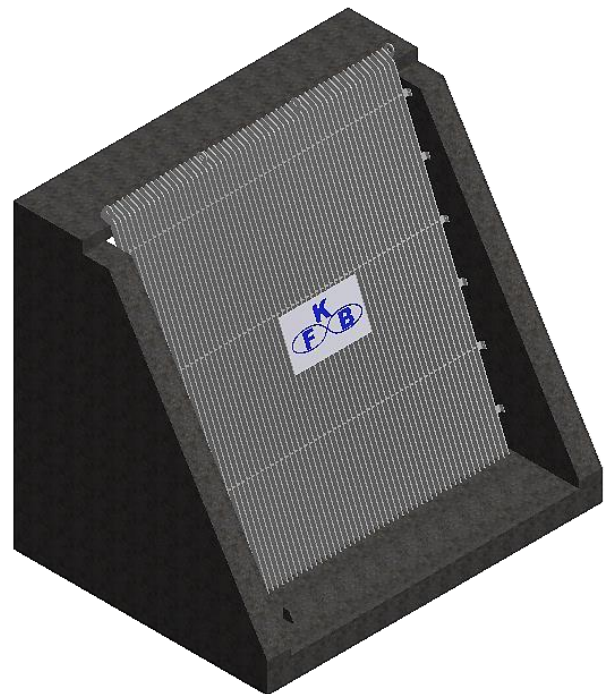
Types of Drives

Lifting Handle



Pos.	Description	Material
1	Trail	ASTM A240 TP 304 / ASTM A240 TP 316) / ASTM A36 with coating (*)
2	Structure of the Panel	ASTM A240 TP 304 / ASTM A240 TP 316) / ASTM A36 with coating (*)
3	Grid	ASTM A240 TP 304 / ASTM A240 TP 316) / ASTM A36 with coating (*)
4	Bolts	Chemical / Mechanical
5	Lifting Handle	AISI 304 / AISI 316

(*) other options on request



(*) other options on request